

WIRE ROPE SHEAVE (BUSH)

316 STAINLESS STEEL



Import



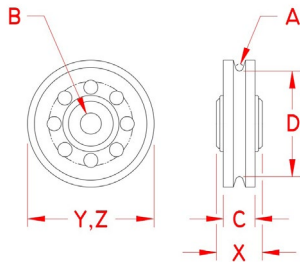
Precision
Cast



Suncor
Exclusive



Suncor
Patent



ITEM	A (wire size)	B (bore)	C (rim width)	D	X (height)	Y (length)	Z (width)	WLL (lb)	WT (lb)	PACKAGING TYPE	EACH (qty)	INNER (qty)	CARTON (qty)	UPC
S0412-0307	3/32" + 1/8"	1/4"	0.56"	1.88"	0.82"	2.25"	2.25"	1,000	0.41	POLYBAG	1	1	78	791506044406
S0412-0310	3/32" + 1/8"	3/8"	0.56"	1.88"	0.82"	2.25"	2.25"	1,000	0.39	POLYBAG	1	1	78	791506044413
S0412-0510	3/16"	3/8"	0.72"	2.75"	0.94"	3.25"	3.25"	1,500	0.91	POLYBAG	1	1	39	791506044420
S0412-0513	3/16"	1/2"	0.72"	2.75"	0.94"	3.25"	3.25"	1,500	0.89	POLYBAG	1	1	39	791506044437
S0412-0713	1/4"	1/2"	0.94"	3.50"	1.13"	4.25"	4.25"	3,000	1.67	POLYBAG	1	1	20	791506044444
S0412-0716	1/4"	5/8"	0.94"	3.50"	1.13"	4.25"	4.25"	3,000	1.70	POLYBAG	1	1	20	791506044451
S0412-0813	5/16"	1/2"	1.13"	4.38"	1.38"	5.25"	5.25"	5,000	3.00	POLYBAG	1	1	12	791506044468
S0412-0816	5/16"	5/8"	1.13"	4.38"	1.38"	5.25"	5.25"	5,000	2.97	POLYBAG	1	1	12	791506044475
S0412-1013	3/8"	1/2"	1.38"	5.25"	1.63"	6.25"	6.25"	8,000	5.79	POLYBAG	1	1	8	791506044482
S0412-1020	3/8"	3/4"	1.38"	5.25"	1.63"	6.25"	6.25"	8,000	5.59	POLYBAG	1	1	8	791506044499

NOTE: FOR WIRE ROPE; FITTED WITH BRONZE BUSH, BORE CAN BE CUSTOMIZED.

*** HUB OF STAINLESS SHEAVE IS APPROXIMATELY 1/8" NARROWER THAN HUB WIDTH OF BEARING GIVEN.**

ALL DIMENSIONS ARE NOMINAL (+/- 3%) AND ARE SUBJECT TO CHANGE WITHOUT NOTICE.